

# Yoki Attitudes TECHNICAL DETAILS

cm



## Sizes Chart Men/Unisex American Apparel T-shirt

code:2001

	XS	S	M	L	XL	2XL
<b>Sleeve Length</b>	20cm	21cm	22cm	22cm	23cm	23cm
<b>Chest Width</b>	42cm	46cm	51cm	56cm	61cm	66cm
<b>Front Body</b>	70cm	72cm	75cm	77cm	80cm	82cm
<b>Length</b>						

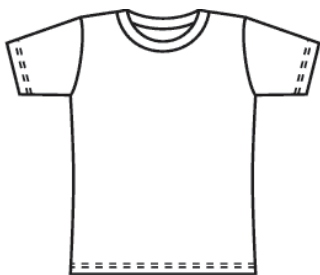
cm

**Chest:** Measure under arms around the fullest part of the chest. Be sure to keep tape level across back and comfortably loose.

**Waist:** Measure around natural waist with a loose tape.

100% Fine Jersey cotton construction. Fabric weight 4.3 oz/yd<sup>2</sup> (146 g/m<sup>2</sup>)

Wash inside out \* Machine wash cold \* Do not bleach \* Do not iron decoration



## Sizes Chart Women American Apparel T-shirt

code:2102

	XS	S	M	L	XL	2XL
<b>Front Body</b>	64cm	65cm	67cm	69cm	70cm	73cm
<b>Length</b>						
<b>Chest Width</b>	37cm	39cm	42cm	45cm	48cm	51cm

cm

**Chest:** Measure under arms around the fullest part of the chest. Be sure to keep tape level across back and comfortably loose.

**Waist:** Measure around natural waist with a loose tape.

100% Fine Jersey cotton construction. Fabric weight 4.3 oz/yd<sup>2</sup> (146 g/m<sup>2</sup>)

Wash inside out \* Machine wash cold \* Do not bleach \* Do not iron decoration



## Sizes Chart Unisex American Apparel Oversized Blouse

code:RSAVC400

	+1	+2
<b>Sleeve Length</b>	20cm	21cm
<b>Chest Width</b>	51cm	56cm
<b>Front Body</b>	75cm	79cm
<b>Length</b>		

cm

**Chest:** Measure under arms around the fullest part of the chest. Be sure to keep tape level across back and comfortably loose.

**Waist:** Measure around natural waist with a loose tape.

Ultra-light oversized T-shirt made with Viscose, a rayon material that has a silky appearance and feel.

100% Viscose construction. Fabric weight 4.2 oz/yd<sup>2</sup> (142 g/m<sup>2</sup>)

Extreme heat not recommended \* Wash cold \* Flat to dry \* Do not iron decoration

# Yoki Attitudes TECHNICAL DETAILS

inches



## Sizes Chart Men/Unisex American Apparel T-shirt

code:2001

	XS	S	M	L	XL	2XL
<b>Sleeve Length</b>	7-3/4"	8"	8-1/2"	8-3/4"	9"	9-1/4"
<b>Chest Width</b>	16-1/2"	18"	20"	22"	24"	26"
<b>Front Body Length</b>	27-3/8"	28-3/8"	29-3/8"	30-3/8"	31-3/8"	32-3/8"

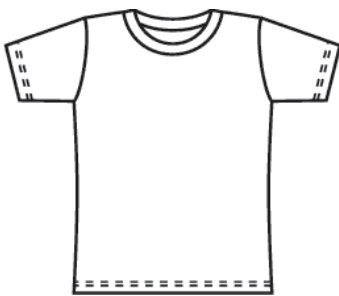
inches

**Chest:** Measure under arms around the fullest part of the chest. Be sure to keep tape level across back and comfortably loose.

**Waist:** Measure around natural waist with a loose tape.

100% Fine Jersey cotton construction. Fabric weight 4.3 oz/yd<sup>2</sup> (146 g/m<sup>2</sup>)

Wash inside out \* Machine wash cold \* Do not bleach \* Do not iron decoration



## Sizes Chart Women American Apparel T-shirt

code:2102

	XS	S	M	L	XL	2XL
<b>Front Body Length</b>	25-1/8"	25-3/4"	26-3/8"	27"	27-5/8"	28-3/4"
<b>Chest Width</b>	14-1/2"	15-1/2"	16-1/2"	17-3/4"	18-3/4"	20-1/4"

inches

**Chest:** Measure under arms around the fullest part of the chest. Be sure to keep tape level across back and comfortably loose.

**Waist:** Measure around natural waist with a loose tape.

100% Fine Jersey cotton construction. Fabric weight 4.3 oz/yd<sup>2</sup> (146 g/m<sup>2</sup>)

Wash inside out \* Machine wash cold \* Do not bleach \* Do not iron decoration



## Sizes Chart Unisex American Apparel Oversized Blouse

code:RSAVC400

	+1	+2
<b>Sleeve Length</b>	8"	8-1/4"
<b>Chest Width</b>	20-1/8"	22-1/8"
<b>Front Body Length</b>	29-3/8"	31-1/8"

inches

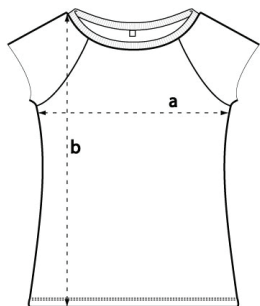
**Chest:** Measure under arms around the fullest part of the chest. Be sure to keep tape level across back and comfortably loose.

**Waist:** Measure around natural waist with a loose tape.

Ultra-light oversized T-shirt made with Viscose, a rayon material that has a silky appearance and feel.

100% Viscose construction. Fabric weight 4.2 oz/yd<sup>2</sup> (142 g/m<sup>2</sup>)

Extreme heat not recommended \* Wash cold \* Flat to dry \* Do not iron decoration



## Sizes Chart Women's Continental Bamboo Viscose Raglan

code:N43

	S	M	L
<b>Chest Width</b>	41.5cm	44cm	46.5cm
<b>Front Body</b>	60cm	62cm	64cm
<b>Length</b>			

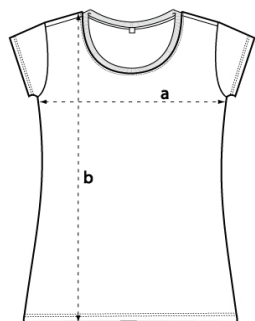
cm

**Chest:** Measure under arms around the fullest part of the chest. Be sure to keep tape level across back and comfortably loose.

**Waist:** Measure around natural waist with a loose tape.

70% Bamboo Viscose 30% Organic Cotton Fine Jersey 115g / 3.4oz.

Wash inside out \* Machine wash cold \* Do not bleach \* Do not iron decoration



## Sizes Chart Women's Continental Organic Tunic T-shirt

code:EP41

	S	M	L
<b>Chest Width</b>	43cm	46cm	49cm
<b>Front Body</b>	70cm	71cm	72cm
<b>Length</b>			

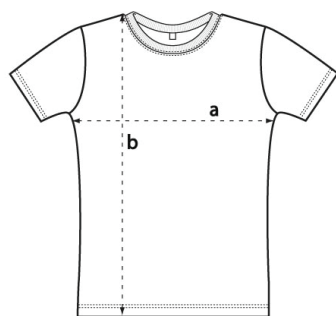
cm

**Chest:** Measure under arms around the fullest part of the chest. Be sure to keep tape level across back and comfortably loose.

**Waist:** Measure around natural waist with a loose tape.

100% Certified Organic Cotton Fine Jersey 115g.

Wash inside out \* Machine wash cold \* Do not bleach \* Do not iron decoration



## Sizes Chart Men's Continental Fitted T-Shirt

code:NO3B

	S	M	L	XL
<b>Chest Width</b>	46cm	48cm	50.5cm	53cm
<b>Front Body</b>	66cm	68.5cm	71cm	73.5cm
<b>Length</b>				

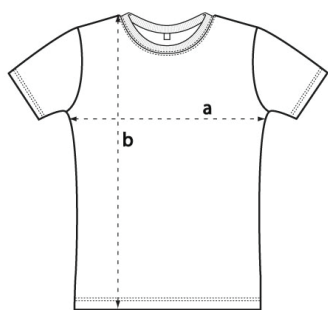
cm

**Chest:** Measure under arms around the fullest part of the chest. Be sure to keep tape level across back and comfortably loose.

**Waist:** Measure around natural waist with a loose tape.

100% Combed Cotton Interlock 240g / 7.2oz.

Wash inside out \* Machine wash cold \* Do not bleach \* Do not iron decoration



## Sizes Chart Men's Continental Organic Jersey T-Shirt

code:NOR03

	S	M	L	XL
<b>Chest Width</b>	50cm	53cm	56cm	60cm
<b>Front Body</b>	70cm	72cm	74cm	76cm
<b>Length</b>				

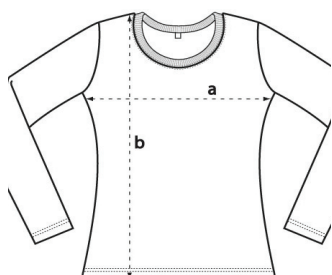
cm

**Chest:** Measure under arms around the fullest part of the chest. Be sure to keep tape level across back and comfortably loose.

**Waist:** Measure around natural waist with a loose tape.

100% Organic Combed Cotton Jersey 165g / 4.95oz.

Wash inside out \* Machine wash cold \* Do not bleach \* Do not iron decoration



## Sizes Chart Women's Continental Long Sleeved Fitted

code:NO2L

	S	M	L	XL
<b>Chest Width</b>	41cm	44cm	47cm	50cm
<b>Front Body</b>	58cm	60cm	62cm	64cm
<b>Length</b>				

cm

**Chest:** Measure under arms around the fullest part of the chest. Be sure to keep tape level across back and comfortably loose.

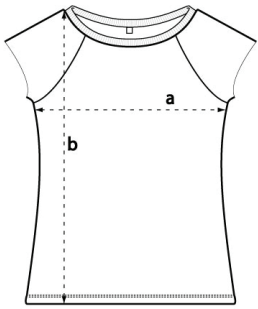
**Waist:** Measure around natural waist with a loose tape.

100% Combed Cotton Interlock 200g / 6oz.

Wash inside out \* Machine wash cold \* Do not bleach \* Do not iron decoration

# Yoki Attitudes TECHNICAL DETAILS

inches



## Sizes Chart Women's Continental Bamboo Viscose Raglan

code:N43

	S	M	L
<b>Chest Width</b>	16-1/4"	17 1/4"	18-1/4"
<b>Front Body</b>	23-1/2"	24-1/2"	25-1/4"
<b>Length</b>			

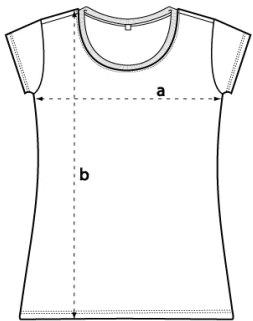
inches

**Chest:** Measure under arms around the fullest part of the chest. Be sure to keep tape level across back and comfortably loose.

**Waist:** Measure around natural waist with a loose tape.

70% Bamboo Viscose 30% Organic Cotton Fine Jersey 115g / 3.4oz.

Wash inside out \* Machine wash cold \* Do not bleach \* Do not iron decoration



## Sizes Chart Women's Continental Organic Tunic T-shirt

code:EP41

	S	M	L
<b>Chest Width</b>	17"	18"	19 1/4"
<b>Front Body</b>	27 1/2"	28"	28 1/4"
<b>Length</b>			

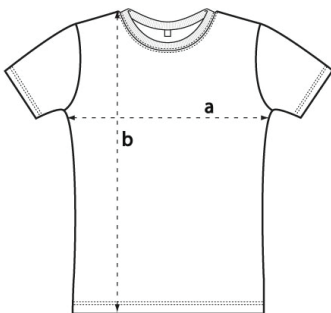
inches

**Chest:** Measure under arms around the fullest part of the chest. Be sure to keep tape level across back and comfortably loose.

**Waist:** Measure around natural waist with a loose tape.

100% Certified Organic Cotton Fine Jersey 115g.

Wash inside out \* Machine wash cold \* Do not bleach \* Do not iron decoration



## Sizes Chart Men's Continental Fitted T-Shirt

code:NO3B

	S	M	L	XL
<b>Chest Width</b>	18"	19"	20"	20 3/4"
<b>Front Body</b>	26"	27"	28"	29"
<b>Length</b>				

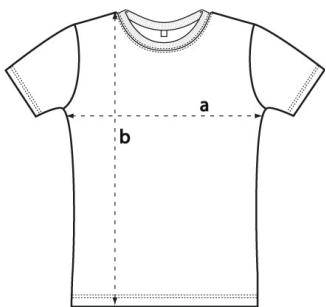
inches

**Chest:** Measure under arms around the fullest part of the chest. Be sure to keep tape level across back and comfortably loose.

**Waist:** Measure around natural waist with a loose tape.

100% Combed Cotton Interlock 240g / 7.2oz. Wash inside out

Wash inside out \* Machine wash cold \* Do not bleach \* Do not iron decoration



## Sizes Chart Men's Continental Organic Jersey T-Shirt

code:NOR03

	S	M	L	XL
<b>Chest Width</b>	19 3/4"	20 3/4"	22"	23 1/2"
<b>Front Body</b>	27 1/2"	28 1/4"	29 1/4"	30"
<b>Length</b>				

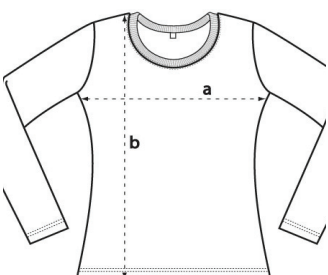
inches

**Chest:** Measure under arms around the fullest part of the chest. Be sure to keep tape level across back and comfortably loose.

**Waist:** Measure around natural waist with a loose tape.

100% Organic Combed Cotton Jersey 165g / 4.95oz.

Wash inside out \* Machine wash cold \* Do not bleach \* Do not iron decoration



## Sizes Chart Women's Continental Long Sleeved Fitted

code:NO2L

	S	M	L	XL
<b>Chest Width</b>	16 1/4"	17 1/4"	18 1/2"	19 3/4"
<b>Front Body</b>	22 3/4"	23 1/2"	24 1/2"	25 1/4"
<b>Length</b>				

inches

**Chest:** Measure under arms around the fullest part of the chest. Be sure to keep tape level across back and comfortably loose.

**Waist:** Measure around natural waist with a loose tape.

100% Combed Cotton Interlock 200g / 6oz.

Wash inside out \* Machine wash cold \* Do not bleach \* Do not iron decoration